

VERTICAL SURFACE FABRIC



MIDWAY
7239 WHEAT



MIDWAY
7242 SADDLE



MIDWAY
7238 ALMOND



MIDWAY
7241 RYE



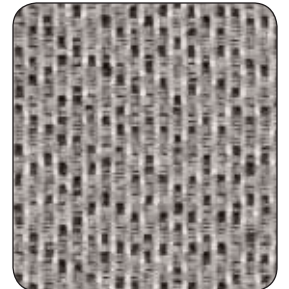
MIDWAY
7240 OPAL



MIDWAY
7237 MINERAL



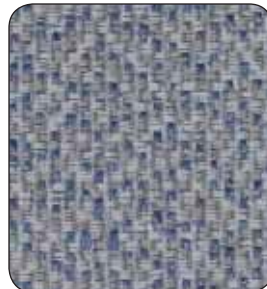
MIDWAY
7246 HAZE



MIDWAY
7245 FLINT



MIDWAY
7244 CHAMBRAY



MIDWAY
7243 OASIS



FABRIC SPECIFICATIONS

CONTENT	100% POLYESTER
WEIGHT	10.65 OZ/LIN YD
ENDS/PICKS	144/34 PER INCH
WIDTH	66"
ORIGIN	CHINA

PERFORMANCE CHARACTERISTICS

TENSILE STRENGTH ASTM D5034	WARP: 212.0 LBS. FILL: 151.0 LBS.
TEAR STRENGTH ASTM D2262	WARP: 37.5 LBS. FILL: 61.3 LBS.
COLORFASTNESS TO LIGHT AATCC 16	40 HRS. CLASS 4
COLORFASTNESS TO CROCKING AATCC 8	4.5 DRY, 4.5 WET

FLAMMABILITY

ASTM E-84 (TUNNEL TEST)	CLASS A OR 1
CALIFORNIA TECHNICAL BULLETIN 117 SECTION E (CS-191-53)	PASSES

RECOMMENDED CLEANING CARE

W-S	WATER-BASED CLEANING AGENTS AND FOAM MAY BE USED FOR CLEANING. THIS FABRIC MAY ALSO BE CLEANED WITH MILD, WATER-FREE SOLVENTS. CLEANING BY A PROFESSIONAL CLEANING SERVICE IS RECOMMENDED.
------------	--

VARIATIONS IN COLOR AND TEXTURE ARE INHERENT TO THIS TEXTILE.
APPLICATION TESTING OF THIS PRODUCT IS RECOMMENDED.



MIDWAY IS A DIRECTIONAL FABRIC. PLEASE USE CAUTION WHEN CUTTING AND APPLYING.



U.L. RECOGNIZED COMPONENT: THIS FABRIC CAN BE APPLIED WITHOUT NEED FOR FURTHER TESTING TO ANY OFFICE PANEL SYSTEM WHICH HAS BEEN AUTHORIZED FOR USE WITH FABRICS INCLUDED IN UL'S FABRIC RECOGNITION PROGRAM.

